

**CARATTERISTICHE:**

Valvole di mandata e ripresa.

**COSTRUZIONE:**

Polipropilene bianco RAL 9016  
con collarino di fissaggio.

**IMPIEGO:**

A soffitto.

Altezza di installazione:  
2,5-3,0 m.

CHARACTERISTICS:

Supply and exhaust valves.

CONSTRUCTION:




RAL 9016 white polypropylene  
with fixing ring.

UTILIZATION:

For ceiling installation.

Installation height: 2,5-3,0 m.

## PREZZI - PRICES

						
	VIP		Dimensioni principali - Principal dimensions			
mm	€	PEZZI - PIECES	A	B	C	D
100		85	97	138	90	15
125		85	122	168	115	15
160		85	157	215	130	15
200		85	195	255	189	15

## DISEGNI - DRAWINGS

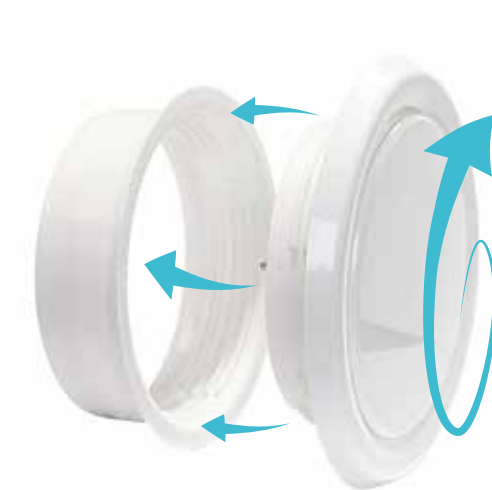
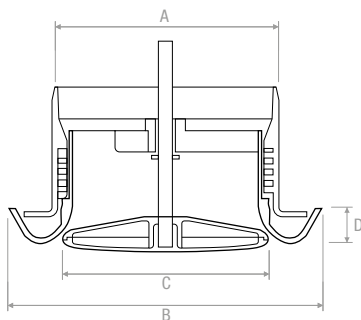


TABELLA DI SELEZIONE - SELECTION TABLE

Modello - Model	$A_k$ [m <sup>2</sup> ]	Q [m <sup>3</sup> /h]		$L_{wa}$ [dB(A)]		$Dp_t$ [Pa]	
		min	max	min	max	min	max
<b>VIP 100</b>	0,00785	20	50	-	21	10	50
<b>VIP 125</b>	0,01276	40	90	-	23	10	50
<b>VIP 160</b>	0,01767	60	130	-	24	10	50
<b>VIP 200</b>	0,03142	100	230	-	26	10	50